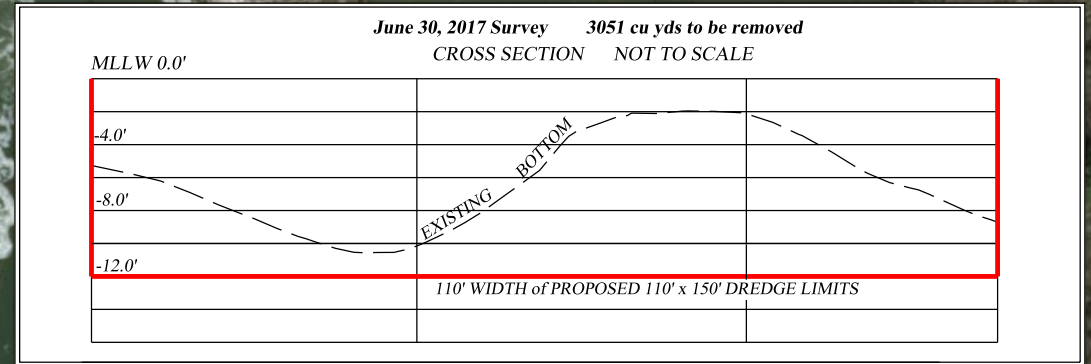
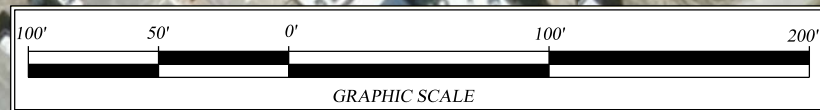


ALL DEPTHS ARE MLLW



DATUM :
GRIDS = STATE PLANE NAD-83
ZONE = NC-3200 NORTH CAROLINA
DISTANCE UNIT = US SURVEY FOOT
DEPTH UNIT = US SURVEY FOOT
ELLIPSOID = WGS84
GEOID MODEL = G2012aCONUS
V DATUM = NORTH CAROLINA, PAMLICO SOUND
VERSION 01 (1983 - 2001) MLLW



CROSS SECTION

**EXISTING CONDITIONS
at
HATTERAS BASIN**

MAP DATE : July 6, 2017

Imagery Date: 2017

Map Produced By NCDOT, Location & Surveys

North Carolina Dept of Transportation
Location & Surveys Unit
1020 Birch Ridge Drive
Raleigh, NC 27610
(919)-707-6800

K. E. HONEYCUTT PE, PLS
REGIONAL LOCATION & SURVEYS ENGINEER

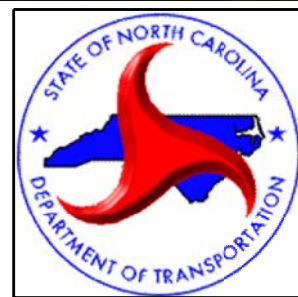
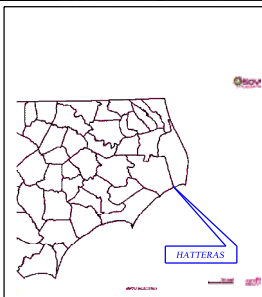
MARK G. WARD, PLS
SONAR OPERATIONS ENGINEER

DATES OF SURVEY:
June 30, 2017

SURVEYED BY :
KRB, MQH, MGW

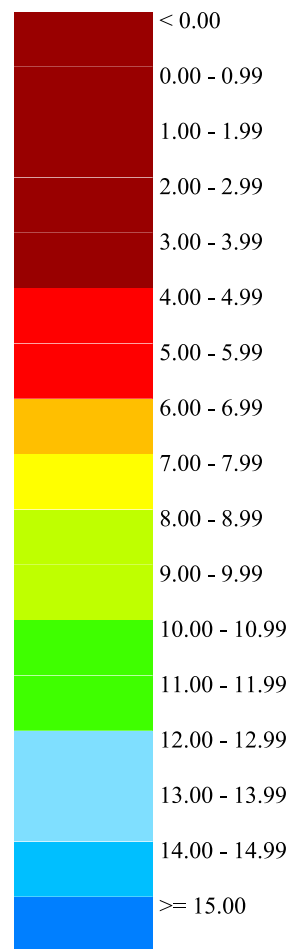
MAPPED BY :
MQH

FILE NAME :
HATTERAS BASIN_LS_SSG_170630.PDF



NOTES:
HORIZONTAL DATUM NAD 83 / 2011.
PROJECT SURVEYED WITH THE NCDOT LOCATION AND SURVEYS BOAT, USING VRS AND GNSS EQUIPMENT WITH EDGETECH 6205 SOUNDING EQUIPMENT.
DATA SHOWN ON THIS MAP AND REPRESENTS THE RESULT OF THE SURVEYS MADE ON THE DATES INDICATED AND REPRESENTS THE CONDITIONS EXISTING AT THAT TIME.
NO BASIN OR CHANNEL DESIGN CREATED.
AREAS INSIDE PROPOSED DREDGING LIMITS WITH NO SURVEY DATA ARE TO SHALLOW FOR SURVEY VESSEL TO ACCESS.

**DEPTHS IN FEET
MLLW**

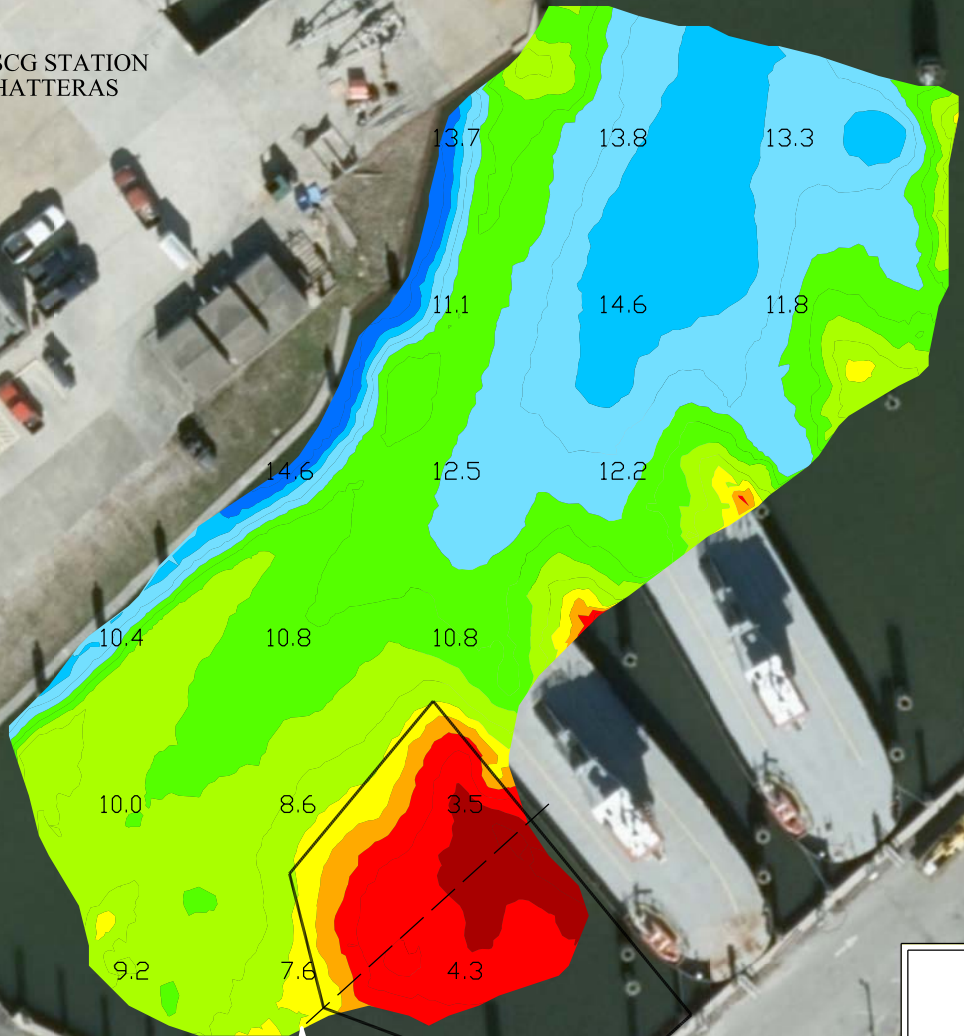


ALL DEPTHS ARE MLLW

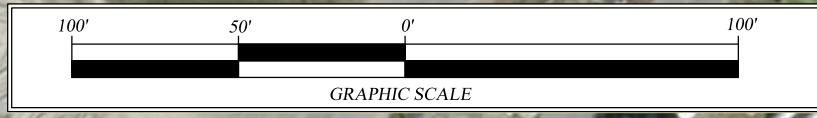
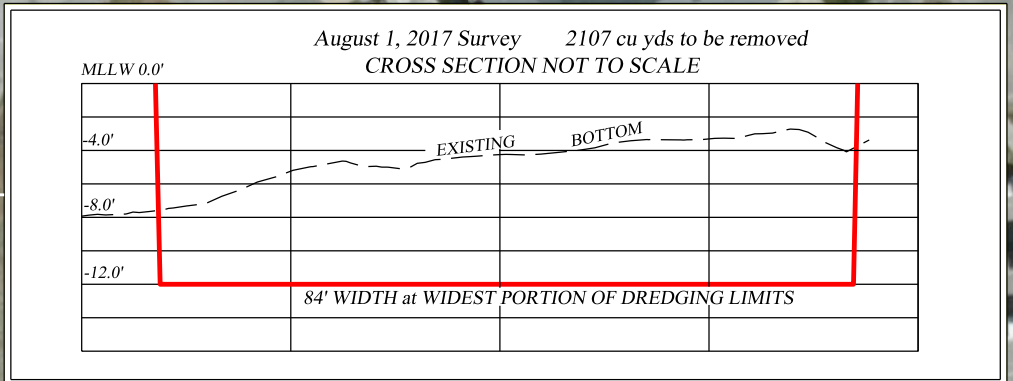


USCG STATION
HATTERAS

HATTERAS FERRY TERMINAL



DATUM :
GRIDS = STATE PLANE NAD-83
ZONE = NC-3200 NORTH CAROLINA
DISTANCE UNIT = US SURVEY FOOT
DEPTH UNIT = US SURVEY FOOT
ELLIPSOID = WGS84
GEOID MODEL = G2012aCONUS
V DATUM = NORTH CAROLINA, PAMLICO SOUND
VERSION 01 (1983 - 2001) MLLW



**EXISTING CONDITIONS
at
HATTERAS BASIN**

MAP DATE : August 8th & 22nd, 2017

Imagery Date: 2017

Map Produced By NCDOT, Location & Surveys

North Carolina Dept of Transportation
Location & Surveys Unit
1020 Birch Ridge Drive
Raleigh, NC 27610
(919)-707-6800

K. E. HONEYCUTT PE, PLS
REGIONAL LOCATION & SURVEYS ENGINEER

MARK G. WARD, PLS
SONAR OPERATIONS ENGINEER

DATES OF SURVEY:
August 1, 2017

SURVEYED BY :
KRB, MQH

MAPPED BY :
KRB

FILE NAME :
HATTERAS BASIN_LS_SSG_170801_REV.PDF



NOTES:
HORIZONTAL DATUM NAD 83 / 2011.
PROJECT SURVEYED WITH THE NCDOT LOCATION AND SURVEYS BOAT, USING VRS AND GNSS EQUIPMENT WITH EDGETECH 6205 SOUNDING EQUIPMENT.
DATA SHOWN ON THIS MAP REPRESENTS THE RESULT OF THE SURVEYS MADE ON THE DATES INDICATED AND REPRESENT CONDITIONS EXISTING AT THAT TIME.
AREAS WITH NO SURVEY DATA WERE INACCESSIBLE DUE TO FERRIES MOORED AT THE TIME OF SURVEY.